

# The National Farmer

Issue 5 | May 2011

## Who is National Farmers Warehouse?

by **Graham Hitchener - NFW General Manager**

Over the past few months I have had the pleasure of meeting many of our valued clients, one of the regular questions asked is "Who is National Farmers Warehouse?" National Farmers Warehouse Pty Ltd is independently owned by two families who have long associations with the rural and farming industries. Both families own rural properties and know the ups and downs of rural business, which we all have seen over the past years. Our owners and directors, though not directly involved in the daily operations of NFW, ensure that the business is operated with integrity towards our staff, clients and suppliers alike.

NFW was established in Toowoomba in 1997 and was originally known as Queensland Farmers Warehouse. In 2007 we changed our name slightly to National Farmers Warehouse following the purchase and development of a number of businesses, some of which are in NSW.

Being an independent business allows NFW to provide quality products and services to all our clients whilst having a strong network of stores to ensure competitive pricing and availability. All our NFW stores endeavor to carry the right products for your needs when you want them. If we don't have the product in stock then we will try and obtain it before you need it.

NFW is part of the local communities in which we operate. Just like our clients we rely on the support of local businesses and farmers. We also employ local people in all our stores.

Following the recent weather events we have all seen the importance of having a strong community. NFW is a local, who believes in supporting locals to build stronger communities.

We at NFW look forward to our continued relationship in providing quality products and professional services to all our clients.



### Price for Message

Ole and Lena's bull took sick and died, so they needed to go to the auction to buy a new one. Ole had to get the crops in and couldn't leave the farm, so Lena took the train to the city to buy a bull. If she was successful, she would take the train back to the farm, then she and Ole would go to town with the truck to pick up their newly purchased bull.

The bidding was furious at the livestock auction, and Lena found herself bidding on the last remaining bull. It took everything she had but ten cents, but she was finally the successful bidder. Unfortunately, the train home was fifty cents. "Please, Mr. Conductor, couldn't you make an exception just once?" pleaded Lena. "Sorry lady," he replied, "but you can send your husband a telegram to tell him your problem. The office is just down the street."

At the Telegraph office, Lena asked, "Mister, how many words can I send to my husband for ten cents?" "It's ten cents a word," the clerk answered. Lena pondered her dilemma, then finally said, "OK, here's da message: 'COMFORTABLE'".

(come for the bull!)

## Month of May - Arrest Easy Dose Super Deal

5Lt Gun pack \$350 including gst.

20 Lt Gun pack \$860 including gst.



### NFW Store Locator:

<b>Toowoomba</b> 326 Anzac Ave 07 4614 4000	<b>Miles</b> 68-74 Murilla St 07 4627 1076	<b>Cecil Plains</b> 48 Toowoomba Rd 07 4668 0888	<b>Warwick</b> 24 Industrial Ave 07 4667 0088	<b>Cottonvale</b> 50 Middleton Rd 07 4685 2136	<b>Meandarra</b> Talwood/Meandarra Rd 0400 255 171	<b>Coonabarabran</b> 28 Charles St 02 6842 1362
---	--	--	---	--	--	---



## MegaMin - Livestock Supplement

Growth and demand for AgSolutions animal supplements has led to the expansion of their product range available from National Farmers Warehouse. The extended supplement range now caters for year round conditions including protein dry supplements for harder times or to boost performance.

AgSolutions animal supplement range, highlights the importance of minerals, trace minerals and true protein sources for livestock health, growth and performance coupled with research trials to support the benefits of mineral supplementation.

**All AgSolution supplements are safe supplements for the utilisation of dry feeds for all livestock.**

The new Mega Min supplement range sees some additional tweaks to increase their effectiveness. All Mega Min loose supplements and lick blocks now contain **iodine**. Iodine functions in the thyroid gland and is important in growth rates and metabolism. Iodine deficiencies can lead to reduced fertility, weak calves, foot rot, retained placenta and poor wool. Too often, pastures tend to be marginal or deficient in iodine levels and, over time nitrogen fertilisation has reduced forage iodine. The New additions to the MegaMin Supplement Range:



4% P

### Extra Phos (4 % P)

- Suitable as a year round supplement for areas low in Phosphorus or when grazing lush green pastures.



8% S

### Extra Sulphur (8% S)

- Suitable as a year round supplement for areas low in Sulphur or when grazing forage sorghum and stubble.
- Sulphur may aid in parasite control.



CONTAINS TRUE PROTEIN

### 10% and 50% Protein meal blends (no Urea).

- Particularly beneficial during winter and dry conditions.
- Natural bypass protein source.
- Slow rumen degradable protein to stimulate appetite of livestock grazing dry feed (a safe supplement for all livestock).



DRY FEED SUPPLEMENT



MINERALS & TRACE MINERALS



MINERALS & TRACE MINERALS



ORIGINAL



12% Sulphur

The advantage of a true protein is that it's a slow rumen degradable protein that provides an extended ability to graze dry feed for longer periods than Urea. As a protein source it stimulates appetite, to maintain feed intake when grazing dry feed, and assists with digestibility. This includes the maintenance and function of microbes in the rumen.

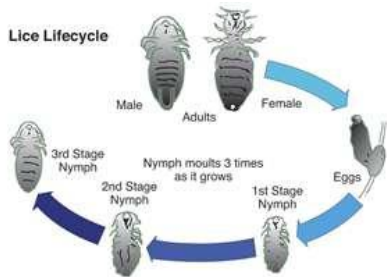
Supplementing with minerals and a true protein source provides the added bonus of a bypass protein that is important for growth.

To find a solution for your supplement requirements call your National Farmers Warehouse today.



# Virbac Animal Health

## Treating Lice with Arrest Easy Dose



The short life-cycle (3-6 weeks) and the prodigious egg laying ability of female lice, coupled with the cooler weather conditions that lice prefer, enable lice populations to explode during winter months. They are spread entirely by contact between cattle and can survive over the animal's entire body.

Lice irritate cattle and can adversely affect your herd in a number of ways. The biting, scratching and rubbing that lice cause can result in hide scruffiness and damage. Damage is caused to fences, yards or trees that cattle use as rubbing posts. Weight gain can be affected, especially in younger cattle or those that are not in optimum condition. A small number of infected cattle can cause havoc in the entire herd if unnoticed or left untreated. Diseased or nutritionally stressed animals will develop more severe infestations than healthy animals and severe infestations can cause anaemia.

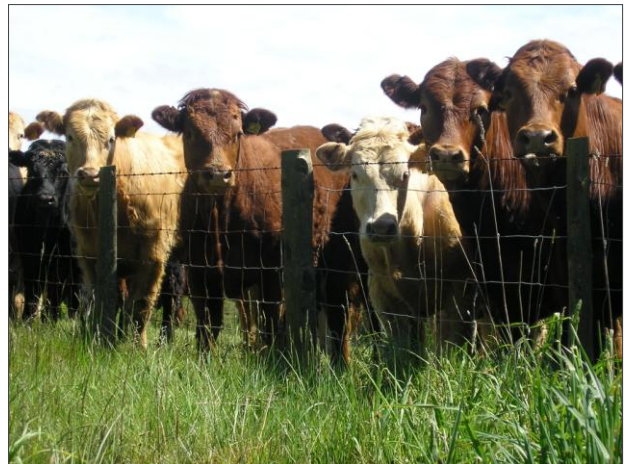


Treating with Virbac's Arrest Easy Dose at the optimum time can help control or eliminate the damage that lice can cause. Arrest Easy Dose is a fast-acting water-based synthetic pyrethroid class pour-on drench for cattle

containing deltamethrin. Trials indicate that 95-100% of lice are killed within 2 weeks of treatment. Lice can be treated with Arrest Easy Dose at any time of the year, but treating early in the season at the first signs of infestation is highly recommended. This offers an optimum opportunity to break the life cycle before a critical mass of lice build up.

### Tips to help effectively control lice:

- Treat all in-contact cattle. Don't mix or pen treated and untreated cattle together.
- Treat new and introduced cattle before mixing with your existing mob.
- Treat as soon as you detect a lice infestation.
- Follow the manufacturer's instructions and ensure you do not under dose.



So don't delay this coming season. Don't let lousy cattle damage your herd, or your profits. Check your herd early and repeatedly to minimise the damage lice can cause. Your local National Farmer's Warehouse member can assist you with additional information and inquiries for Arrest Easy Dose.

See Page 1 for a great offer on Arrest Easy Dose for the month of May.

## The Stanthorpe Show Campdraft

by Peter Christopher

The annual Stanthorpe Show Campdraft was held on the first weekend of April at the Stanthorpe Showgrounds. Unlike earlier in the week, the weather was perfect - fine and clear. Participant's spirits were high and the weekend was an overall success.

The Campdraft Program included the Tom Fox Maiden Draft, National Farmer's Warehouse Open Draft and Maiden Draft Final on the Saturday, and the Stanthorpe Vet Care Services Novice Draft, Junior Draft, Juvenile Draft, Novice Draft Final and Open Draft Final on the Sunday.

Alongside co-sponsor, Barastoc Ridley, National Farmers Warehouse (NFW) Cottonvale Manager, Peter Christopher, manned a site for the duration of the weekend, coming to the aide of some hungry horses and taking the opportunity to get to know the competitors and spectators a bit better.



The NFW Open Draft was won by Mickael Dwan from Allora on Elwanvale Evita with a score of 176. Second place went to Anna Hudson from Tenterfield on Bill's Stylish Cutter with a score of 161. The Stanthorpe Vet Care Novice Draft was won by our own local Greg Widderick from Stanthorpe on Too Cool with a score of 170. Second place went to Geof Kraut from Tenterfield on No Comment with a score of 165. The Tom Fox Maiden Draft was won by Mark Chorley from Tenterfield on Bracelett with a score of 168 and second place went to Andrew Petersen from Old Koreelah on Mabel with a score of 165.



Greg Widderick on Administrator 8

The two day programme allowed all to catch up on Saturday evening with a wonderful meal (served by local charity The Granite Belt Wildlife Carers) and a yarn over a beer or two.

NFW would like to take this opportunity to congratulate all competitors from near and far for making this event the success that it was. A huge thank you also to the campdraft committee members and volunteers who donated countless hours to make this event successful and enjoyable for all. At the close of the draft, Peter said "All in all, the atmosphere throughout the whole weekend was relaxed and enjoyable. If this weekend is anything to go by, we should all be in for a huge event in 2012!"

It's time to meet

## Murray

### Staff Profile...

Murray Weller has been with NFW for three years and looks after our clients with in-store and over the phone enquiries. Murray was raised on the land and has previous history working in rural merchandise and managing properties. He has extensive experience in stud stock preparation and animal husbandry. In his spare time, Murray enjoys landscaping, coaching his son's rugby team and helping with his family's cattle show preparation service.



If you would like to speak to Murray about any of your farming requirements you will find him in our Toowoomba store. Call 07 4614 4000 or email [murray.weller@nfw.com.au](mailto:murray.weller@nfw.com.au).

# 'No Farming Worries'