

# The National Farmer

Volume 1, Issue 4 | April 2011

## To bait or not to bait

by Ed Offner

“The high rainfall experienced late last year and abundant grass feed available from a great harvest has meant mice plagues have already hit the Western Downs”, says Ed Offner of National Farmers Warehouse Miles Branch. Speaking with local growers, Ed says they don’t recognize the urgency of mouse control and the speed at which mice can damage a crop.



The highest risk is at sowing. In fact as much as 5% of sown grain can be destroyed each night! Controlling mice plagues prior to sowing is crucial if growers want to protect their crops and ensure a successful season and high yield.

Ed believes in MouseOff (zinc phosphide bait). He says it is an effective tool in the control of mice plagues. “Mouse baiting is a worthwhile investment” he says. It only takes one grain of MouseOff to kill a mouse, although the average eaten is 2-15 grains before the mouse dies. Most situations require 1kg/Ha of MouseOff as an effective control of mice infestations. This is enough bait to kill up to 20,000 mice! Research has shown it is typical for MouseOff to achieve a greater than 98% success rate within 1-2 days of application.



Some are saying that 2011 could see the “mother of all mouse plagues”. The amount of rain we have seen does make it difficult to predict what will happen when it is time to plant, however any delays by growers in the decision to bait or not to bait may have disastrous consequences.

### Test your knowledge ...What do you know about Magnesium?

1. In plant nutrition, magnesium (Mg) is a \_\_\_\_?
2. Which nutrient is dependent on Mg for uptake in plants?
3. Mg plays a role in which plant metabolic functions?
4. You’ve just gotten back your soil test report. Soil Mg levels are below 35lb/acre. Did your soil make the grade or fail miserably?
5. Below a soil pH of \_\_\_\_, Mg can become a limiting factor in plant growth.
6. Adding high Ca limestone to soil can \_\_\_\_ Mg deficiencies.
7. For soils with a good soil nutrient exchange, a desirable ratio of soil Ca to Mg is about \_\_\_\_?
8. The primary losses of soil Mg and Ca are by \_\_\_\_?
9. Where are Mg deficiencies most likely to occur first?
10. Excessive applications of which nutrients can induce Mg deficiencies?

Month of April – purchase 300 or more Leader NLISEnvirotags and receive bonus products. See page 3 for details.

### NFW Store Locator:

<b>Toowoomba</b> 326 Anzac Ave 07 4614 4000	<b>Miles</b> 68-74 Murilla St 07 4627 1076	<b>Cecil Plains</b> 48 Toowoomba Rd 07 4668 0888	<b>Warwick</b> 24 Industrial Ave 07 4667 0088	<b>Cottonvale</b> 50 Middleton Rd 07 4685 2136	<b>Meandarra</b> Talwood/Meandarra Rd 0400 255 171	<b>Coonabarabran</b> 28 Charles St 02 6842 1362
---	--	--	---	--	--	---

## PROLiX - the Full Service Supplement



*The Leaders In Liquid Feed*

As winter approaches many producers will be looking to use supplements within their management program as their pasture qualities begin to recede. Prolix is a palatable, protein enriched molasses based liquid supplement for beef and dairy cattle containing a balanced profile of essential minerals and vitamins with the added benefits of consumption control, safety and convenience. Prolix has a consumption control property which allows the servicemen and producer to adjust the product at the trough as required to control consumption levels.

Two key components of Prolix include bonded urea and flavomycin. The benefits of bonded urea include the slow release and digestion allowing a greater dose of urea to be given safely and efficiently. Additionally the ammonia release is synchronised with the sugar availability, which ensures then rumen micro-organisms have access to the right amounts of both energy and nitrogen to form microbial proteins. Flavomycin enables cattle to utilise the energy and protein in feeds more efficiently, therefore increasing performance.

Prolix is one of the few molasses based **full service supplements** available on today's market. The **Full Service Program** includes the provision of feed-out troughs and delivery of the product into the paddock. This means two things for the producer - no capital outlay is required for the purchase and set up of tanks, troughs and pumping equipment; and troughs are regularly filled and consumption levels monitored by fully trained servicemen.



The Prolix Full Service Program has many advantages for the producer, including:

- ✓ The assistance with the time management of supplement delivery and everyday management practices.
- ✓ No initial capital outlay to commence supplement feed programs.
- ✓ You chose when you want to start and finish the program.
- ✓ There are no tanks half filled with product left on the farm for months at a time or unused equipment lying around in better seasons.
- ✓ The consumption control mechanism ensures intake can be held at the most nutritionally and economically desirable level.
- ✓ Enhances your animal's utilisation and performance on the feed that you have available.
- ✓ No labour costs in mixing feeds, filling troughs and monitoring consumption levels.
- ✓ More time to complete other jobs.
- ✓ Safe and convenient.

These features make the **Prolix Full Service Program** the number one choice in livestock nutrition. Prolix Supplementation programs have lead to comments such as, "we just put the cattle in the paddock, work out how much we want to spend per day and the agent then supplies and delivers the tubs and the product." It all comes back to economics; some mixes may be cheaper per unit however consideration needs to be given for labour, time, maintenance and fuel costs.



# Leader Products®

## Livestock Identification Specialists

**Leaders Products** was incorporated in 1948 and is a specialist manufacturer and distributor of livestock identification systems and wholesale distributor of an extensive range of veterinary and animal husbandry products. We are solely Australian owned and operated and an approved supplier for the **National Livestock Identification System (NLIS)**. We are committed to supplying leading-edge livestock identification and animal husbandry products throughout Australia and Internationally.

Leader products has recently released their new round **Envirotag**. The Envirotag has a high performance Texas Instruments Transponder. Leader over-moulds the transponder into a washer. This washer is then placed inside the tag and is capable of being removed back at our factory and put into a new tag making it fully recyclable and therefore more cost effective.

Leader has been recycling transponders for over 10 years now with our **Leadertronic NLIS cattle tag** and have been able to pass the savings on to growers.

The **Envirotag** has a greater retention than other tags on the market. There are no lumps or damaged chips on application and less ear tearing and they are totally Australian made. They can be custom-marked using Laser Marking and can be matched up with corresponding **Flexible Tags** (for management use in the opposite ear) to provide a **complete Livestock ID system**.

These tags are available immediately from National Farmers Warehouse at \$3.00 each. You can also order matching management tags.



### APRIL DEAL through NFW:



If you order 300 NLIS cattle tags you will receive a free Jumbo Ring Expander and 25 bands.



If you order 500 NLIS tags you will receive Jumbo Expander with 125 bands



If you order 1,000 tags you will receive a free Blue Healer Cattle prod.



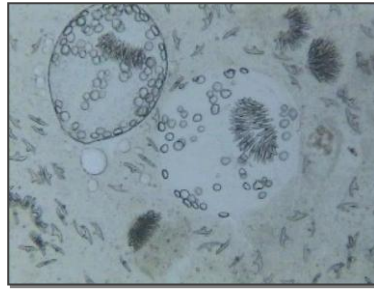
Leaders in the field since 1948.

[www.leaderproducts.com.au](http://www.leaderproducts.com.au)

## Why we use faecal egg counts in horses. by Simon Lakin

Simon Lakin has been conducting on-farm Faecal Egg Counts for many studs and spellers on the Darling Downs for many years. He has been in the Animal Health industry for over 15 years and has seen the damage caused by worms in horses. Simon is involved in performing tests, relaying results and assisting horse owners in developing worming programmes to ensure their horses are healthy and worm free.

A Faecal Egg Count is a test undertaken with a microscope to identify an indication of a worm burden. A sample of dung is taken and the number of eggs it contains is recorded. This egg count indicates the level of laying adult worms present in the horse. FEC's are important for a number of reasons, including:



Faecal egg count

- Provides evidence of an existing worm burden;
- Identifies if worming is required at that time of testing;
- Identifies whether the current worming programme is effective;
- Allows the ability to tailor worming programmes to suit individual properties; and
- Allows the horse owner to battle against resistance.

In summary a Faecal Egg Count provides the horse owner with information which allows them to develop an effective worming strategy.

If you are interesting in on-farm testing with faecal egg counting kits and assistance in developing cost effective worming programmes, contact Ross Ruhle from NFWs Toowoomba Branch on 4614 4000. Ross will arrange for Simon to consult with you. This is a valuable service at no cost to you, and one you should consider as a regular part of your horse's health regimen.

### Answers to Magnesium quiz:

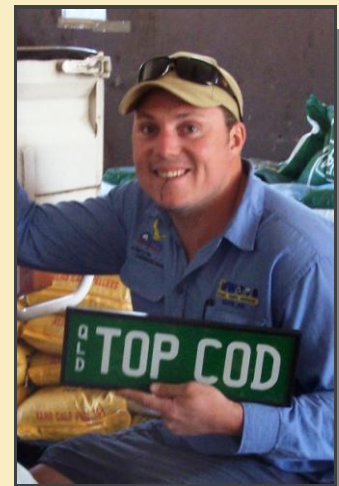
1. Mg is an essential macronutrient. This and other macronutrients, such as nitrogen (N), phosphorus (P), potassium (K), calcium (Ca) and sulphur (S) are necessary in large amounts - usually up to 50 mg/kg in the plant material.
2. Mg has a co-dependent relationship with P in soils. In plants, Mg acts as a P carrier, such that P uptake is impossible without Mg...and vice versa.
3. In addition to being a constituent of chlorophyll, magnesium also is involved with other metabolic functions, such as protein synthesis, enzyme activation and cell division.
4. Your soil flunked Mg in a big way!
5. Most productive soils lie in a pH range of 5-8.
6. High Ca inputs can *promote* Mg deficiencies by encouraging growth in plants, causing Mg demands to increase.
7. For those soils with good nutrient exchange rates, a 10 to 1 between Ca and Mg is a good rule of thumb to follow.
8. Leaching and erosion are both principle culprits in losing available Mg and Ca from the soil.
9. Mg deficiency symptoms occur first on older leaves. The loss of a healthy green colour can be the first indication.
10. Excessive applications of Ca, K or Ammonium (NH<sub>4</sub><sup>+</sup>) can induce Mg deficiencies.

Have you met  
**Ed Offner?**

### Staff Profile...

Ed is one of our professional Agronomists and Salespersons based in the Miles Store. Prior to joining NFW, Ed was with Elite Ag. He completed his Bachelor of Applied Science (Agronomy) at the University of Queensland and has eight years experience in cotton and broadacre farming. When not hard at work, Ed enjoys playing Rugby, fishing, water skiing, snow boarding and travelling. Ed and his fiancé are due to marry this month.

Congratulations Ed!



If you would like to speak to Ed about any of your farming needs you can contact him on 0428 681 080 or email at [ed.offner@nfw.com.au](mailto:ed.offner@nfw.com.au).

# 'No Farming Worries'